



SURI RAJENDRA METAL

Since 1997

(STOCKISTS & SUPPLIER OF FERROUS & NON-FERROUS METALS)

(An ISO 9001:2015 Certified Company)



**ADD: 2/4, DURGA ESTATE,
OPP. AJAY ESTATE,
RAKHIAL,
AHMEDABAD.
GUJARAT – 380023.**

ABOUT US:

- We are based in Ahmedabad (India), the company has scaled incredible heights in business owing to its innovative products. The company's productivity and clients base is always on an upward swing.
- We believe that commercial success and corporate responsibility should go hand-in-hand. We must therefore recognize and manage the impact of our business and its contribution to society.
- Our Vision is to be a Global Player and Market Leader in Stainless Steel Distributions.
- Our Mission is to provide the customers with the best quality at right time with excellent service in order to achieve utmost customer satisfaction.
- We believe in High Quality Products and One Time Schedule.

1. SS ANGLES & CHANNELS:

- Equal angle is used in metal construction, industrial and agricultural applications. Various pieces of metal frames, metal brackets, steel chassis, components and parts of machinery can be made from equal angle. Equal angles are available with various types of bar end finish for example-chamfered ends, plain ends without burrs or sharp edges. They go through hot Rolling, annealing and pickling to improve their material properties.
- Angles from sizes 20x20x3mm/4mm thick, 25x25x3/4mm, 30x30x3/4mm, 35x35x3/5 mm, 40x40x3/5/6 mm, 50x50x3/5/6 mm, 65x65x3/5/6 mm, 75x75x3/5/6mm, 100x100x5/6mm available in 202, 304/304L & 316/316L.

Supply conditions

Length Up to 6 meters

Tolerances ASTM A484, EN 10056

HRAP Hot rolled, annealed & pickled

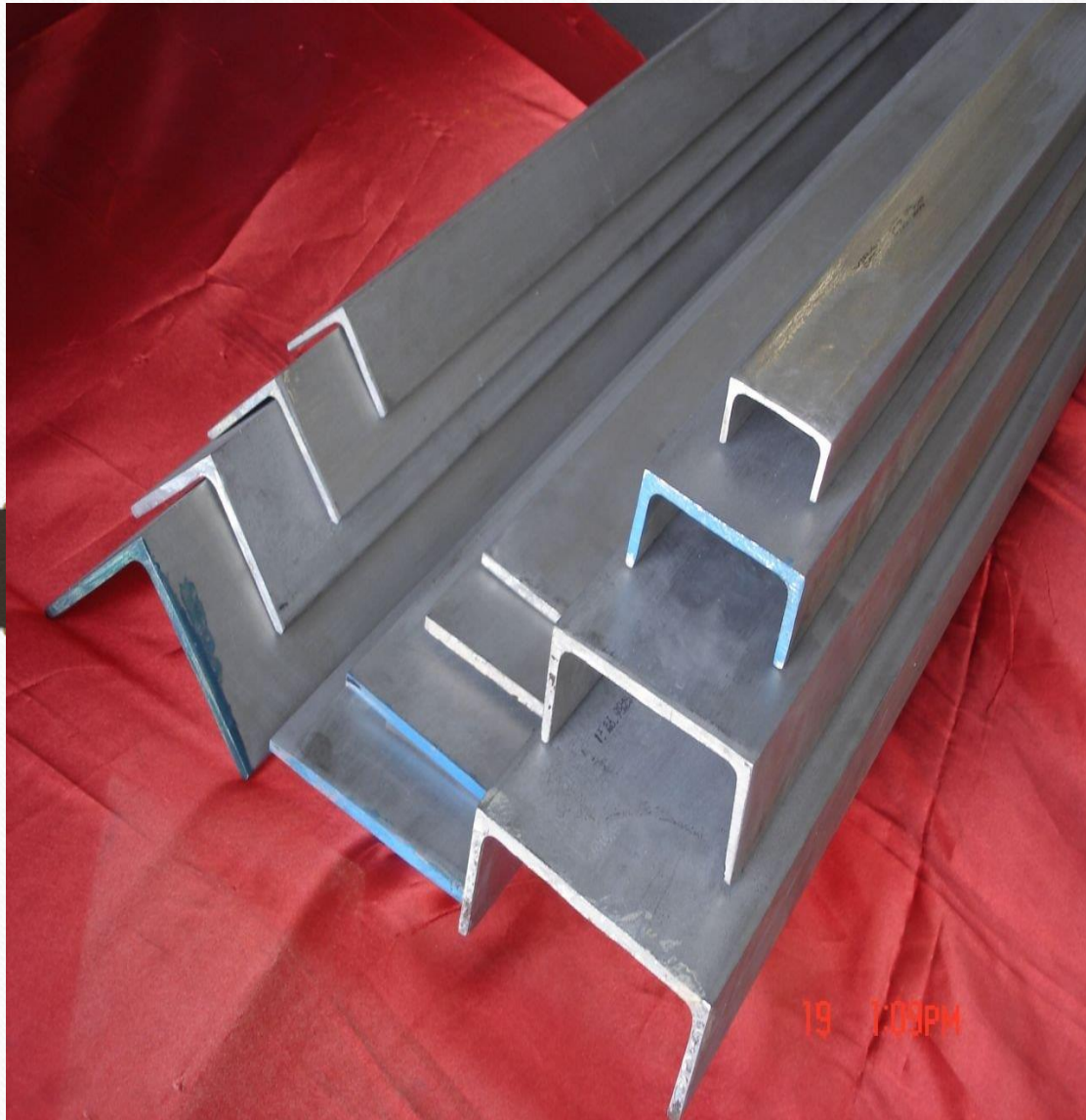
Grit polish As per customer's request

Bars end finish Chamfered ends, plain ends without burrs or sharp rldges

Specifications As per EN, DIN, JIS, ASTM, BS, ASME, AISI, etc.

Grade confirmation through PMI testing with handheld spectrometer.

Free from radioactive elements, mercury & lead contamination.



COMPANY PROFILE:

- **SURI RAJENDRA METAL** are known for their expertise in all types of Stainless Steels of quality 202, 303, 304/304L & 316/316L. Since 1997, we have accumulated rich experience in trading of metals. Our aim is to build long-term relationships with our customers resulting in solid and continuous growth for both parties.
- We buy and sell products of best quality, in line with the technical specifications of our clients.
- Our employees comply with our code of good practices with the highest integrity, and commit to operate our business with total professionalism, honesty and transparency.
- Due to the expertise of our assiduous team of professionals, we have earned an admirable reputation in the field of manufacturing, exporting and supplying flawless range of **Stainless Steel, Aluminium, Brass & Copper like Round Pipes, Square Pipes, Round Bar, Square Bar, Hex Bar, Sheets, Coils, Circle, Angle, Flats, Fittings, Pipe Fittings, etc.**
- Our team of professional holds vast experience and helps us in catering the diverse requirements of clients in the most effectual manner. Moreover, all our professionals are easily adaptable to the latest changes taking place in the industry.

2. SS PATTA & FLATS:-

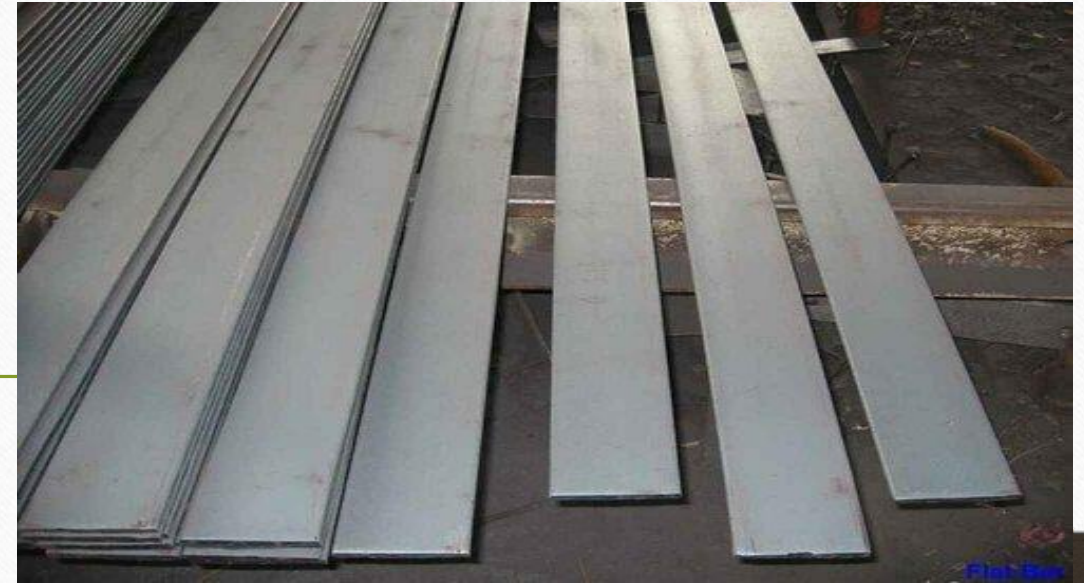
- Flat bars gain their characteristics under hot rolling, annealing, and pickling. The flat surface and angular face make them extremely versatile for the variety of projects such as frame construction, building support, industrial artwork etc. They are available up to the length of 6 meters.

- Supply conditions

Length	Up to 6 meters
Tolerances	ASTM A484, EN 10058
HRAP	Hot rolled, annealed & pickled
Code	Both ends are color coded as per the customers specific requirement
Specifications	As per EN, DIN, JIS, ASTM, BS, ASME, AISI, etc.
Laser printing as per grade & size.	
Grade confirmation through PMI testing with handheld spectrometer.	
Free from radioactive elements, mercury & lead contamination.	

Size range

Size (mm)	Size (inch)	Thickness (mm)	Thickness (in inches)
20mm	7/8"	17mm to 18 mm	2/3" – 5/7"
25mm	1"	5 mm to 20 mm	3/16" – 4/5"
30 mm	1-3/16"	5 mm to 20 mm	3/16" – 4/5"
32mm	1-1/4"	6 mm to 20 mm	1/4" – 4/5"
35mm	1-3/8"	5 mm to 20 mm	3/16" – 4/5"
40mm	1-4/7"	5 mm to 25 mm	3/16" – 1"
45mm	1-7/9"	5 mm to 25 mm	3/16" – 1"
47 mm	1-6/7"	17,25 & 32 mm	2/3", 1" & 1-1/4"
50mm	2"	5 mm to 32 mm	3/16" – 1-1/4"
55mm	2-1/16"	5 mm to 25 mm	3/16" – 1"
57 mm	2-1/4"	32 mm	1-1/4"
60 mm	2-3/8"	5 mm to 35 mm	3/16" – 1-3/8"
63mm	2-1/2"	10 mm to 30 mm	3/8" – 1-3/16"
65mm	2-5/9"	10 to 30 & 35 mm	3/8" – 1-3/16", & 1-3/8"
70mm	2-3/4"	6 mm to 25 mm & 40 mm	1/4" – 1", & 1-4/7"
75mm	3"	8 mm to 25 mm	5/16" – 1"
80mm	3-1/8"	8 mm to 20 mm	5/16" – 4/5"
90mm	3-1/2"	8 mm to 20 mm	5/16" - 4/5"
100mm	4"	8, 10, 12	5/16", 3/8", 1/2"



3. SS PIPES:-

- All types of welded and seamless pipes sizes from od 8mm to 305mm in 202,304,304L,316 and 316L qualities.
- In Square pipes, sizes available are 1/2"x1/2", 5/8"x5/8", 3/4"x3/4", 1"x1", 30x30mm, 38x38mm, 40x40mm, 40x20mm, 50x25mm, 50x50mm, 75x25mm,75x50mm, 75x75mm, 65x65mm, 100x25mm, 100x50mm, 100x100mm available.
- Capsule pipe 25x12, 35x12, 35x16 available.



4. SS Rods:-

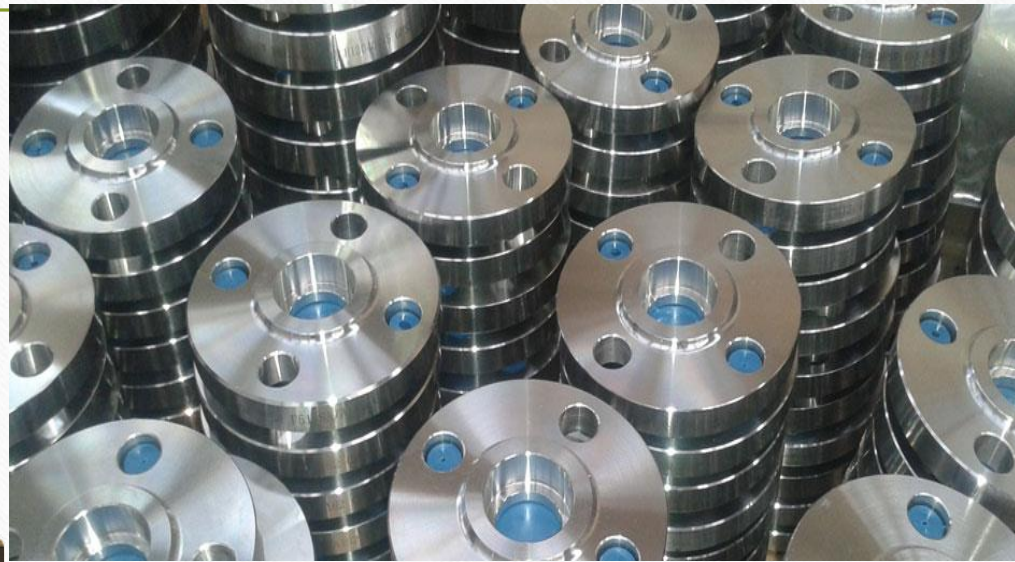
- Rods available from size 3mm to 150mm in 202, 303, 304/304L & 316/316L quality. Available in rough, bright & export bright. Hex & Square rods are available from 6mm to 50 mm in Hot-Rolled & Bright finish.
- Our stainless steel bright bars are crafted with high finishing for superior quality and they are massively used in producing mechanical parts, owing to their paramount mechanical properties. Popular applications are found in the manufacturing of machine tools, parts of heavy machines, electric pumps, electric motors, railway engines, coaches, arms, ammunition, automobile parts and many more.

Supply conditions	
Length	Up to 6.5 meters
Tolerances	h7, h8, h9, h10, h11, k12, k13
Surface finish	RA upto 0.2 mm (8.7 RMS)
Straightness	Up to 0.5 mm per meter TIR
Grit polish	K240,K320 or as per customer's requirement
Heat treatment	Soft annealing, solution annealing, oil & water quenching, tempering & normalizing
Bars end finish	Chamfered ends, 300, 450 & 600 plain ends without burrs or sharp edges
Specifications	As per EN, DIN, JIS, ASTM, BS, ASME, GHOST, AISI/Nace MRO175
Cold drawn, centreless ground, peeled & polished, rough peeled or smooth turned bar	
Grade Confirmation through PMI testing with Handheld Spectrometer.	
Free from radioactive elements, mercury & lead contamination	



5. SS FITTINGS:-

Specialists in Tube Fittings, Pipe Fittings, Weld Fittings, Socket Weld Fittings, Coupling, Cap, Union, Hex nipple, Nipple valve, Reducer, Valves, Flanges, etc. in 202, 304, 304L, 316 & 316L quality.

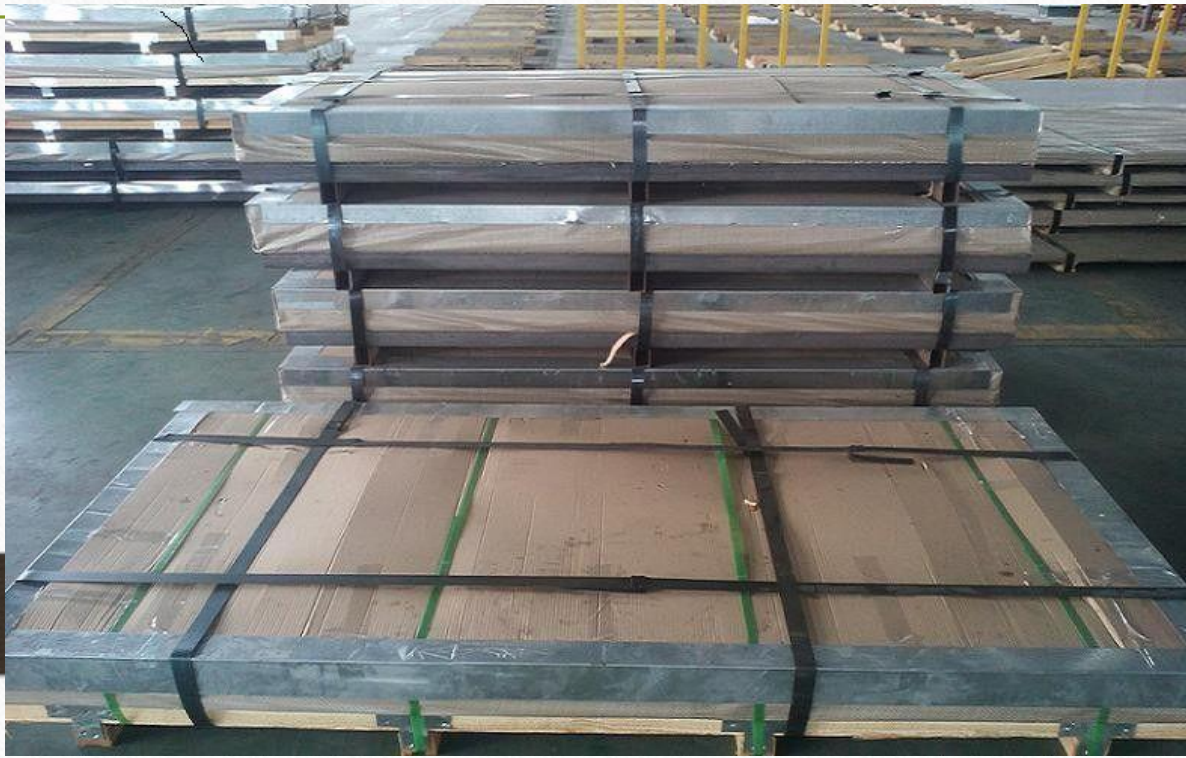


SOCKETWELD FITTINGS



6. SS SHEETS, COILS & STRIPS:-

- The plates and coils are of premium quality in terms of dimensional adherence and internal soundness owing to its clean raw material, sound steel refining facilities and an efficient rolling mill.
- SS Sheet & Coil available from thickness 1mm to 20mm 304/304L & 316/316L quality in size 8ftx4ft & 5ftx10ft. Also plastic coated sheets available from 1mm to 3mm. Customized sizes also available.



7. Aluminium Bar



- Aluminum is one of the most abundant metals on earth and is one of the most used materials within the construction industry. Due to its many material advantages, aluminum bar can be used to provide structure and support to a wide range of applications.
- Suri Rajendra Metal Supply, Co. is an industry leading aluminum bar supplier. We supply numerous styles of aluminum bar, including 6061 aluminum bar and 6063 aluminum bar. If you have any questions regarding our aluminum bar options, [contact us](#) and we would be happy to assist you.

How is Aluminum Bar Manufactured?

- Aluminum bar is most commonly manufactured through the process of extrusion. In extrusion, aluminum bar is manufactured by pushing the material through a die that is under pressure. As the aluminum is pushed through the pressure filled die, it is processed into the producer's desired shape, which is either square, rectangle, hex or round.
- **Aluminum Bar Advantages:** Aluminum is non-toxic and can be used in a wide range of industrial applications. Aluminum bar is extremely reflective and is non-combustible, which means that it will not burn. Some of the other benefits of aluminum bar products, include: Durable, Ductile, Malleable, Conductive, odorless, Lightweight, Strong & Resistant to corrosion.

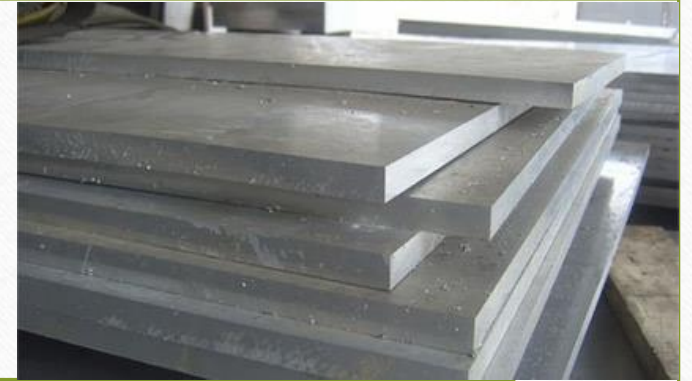
Aluminum Bar Applications: Aluminum bar is produced through an extrusion process and is elongated using dies. Aluminum bar can be produced into a variety of different shapes and can be used for many different industrial applications. Aluminum bar has many different uses and industrial applications due to its light weight, corrosion resistance and excellent machinability. Aluminum bar continues to be the choice metal for many different industrial applications including: Medical Assembly Aircraft Construction, Structural components & Commercial Transportation.

Aluminum Bar Styles: Aluminum bar comes standard in a variety of styles and shapes. The shape of the aluminum bar usually dictates what the aluminum bar will be used for. Suri Rajendra Metal Supply Co. carries a large quantity of aluminum bars, some of which include: Aluminum Square Bar, Aluminum Rectangle Bar, Aluminum Hex Bar, Aluminum Round Bar

Aluminum Bar 6061 - Aluminum bar 6061 is a structural aluminum alloy that maintains extremely good mechanical properties. 6061 is considered a wrought alloy, as opposed to a casting alloy, which means that it can be extruded, rolled, or forged into a variety of shapes. Aluminum bar 6061 is highly suitable for applications such as building products, electrical products, piping, and recreational products.

Aluminum Bar 6063 - Aluminum 6063 is one of the most popular aluminum extrusion alloys on the market. Often referred to as architectural aluminum, 6063 is often used within architectural applications. This medium strength alloy is often used for applications such as railings, window frames, door frames, roofs and more.

8. Aluminium Sheet



- With an outstanding strength-to-weight ratio and natural corrosion resistance, aluminum sheet metal is popular for a broad range of applications. Aluminum sheet and plate are used in everything from aerospace and aircraft manufacturing to beverage packaging, cryogenic storage applications to siding, gutters, and roofing for homes.
- Aluminum Plate vs. Aluminum Sheet: Aluminum sheet and aluminum plate are essentially the same; the only true distinction is in their respective thickness. Aluminum sheet is any aluminum sheet metal thicker than foil but thinner than 6mm; it comes in many forms including diamond plate, expanded, perforated and painted aluminum sheet. Aluminum plate is any aluminum sheet metal that is thicker than 6mm.
- **Aluminum Sheet & Plate Options**
 - ❖ **Alloy:** 3003 aluminum sheet metal, 5052 aluminum sheet metal, 6061-T4 aluminum sheet metal, 6061-T6 aluminum sheet metal, 6061-T651 aluminum plate, etc.
 - ❖ **Thickness/Gauge:** 0.025", 0.032", 0.040", 0.050", 0.063", 0.080", 0.090", 0.100", 0.125", 0.160", 0.190", 1/4", 5/16", 3/8", 7/16", 1/2", 5/8", 3/4", 7/8", 1", 1-1/8", 1-1/4", 1-1/2", 1-3/4", 2", etc. **Width:** 36", 48", 48-1/2", 60-1/2", 60" & 72".
- **Length:** 96", 96-1/2", 120", 144" & 144-1/2".

9. Aluminium Tube



- Aluminum tube has many unique features and benefits that make it a highly sought after metal that is used in various industrial applications. Due to its physical properties aluminum tube is often used as an economical way to deliver electrical power.

Aluminum Tube Applications

- Aluminum tube has a variety of industrial applications, some of which include: Structural components, Frames, Machine Parts, Truck & Marine Components, Marine fittings & Aerospace.

Aluminum Tube Styles

- Aluminum tube comes standard in a variety of styles and shapes. Suri Rajendra Metal Supply Co. carries a large quantity of aluminum tubes, some of which include:
 - Aluminum Square Tube
 - Aluminum Rectangle Tube
 - Aluminum Round Tube

10. Aluminium Flat



Suri Rajendra Metal Supply sells the highest quality aluminum angles, tees and shapes. Aluminum angles, tees and shapes are a good substitution for steel when you need a solution that is a fraction of the weight. Aluminum angles, tees and shapes are also highly resistant to corrosion, which adds to its overall value.

- Aluminum Channel Applications

Aluminum angles and tees are used within numerous industrial applications, some of which include: Scaffolding, Ship & Building Construction, Transmission Towers, Truck Trailers, Machine Parts, Furniture Applications & Aluminum Channel Styles.

Aluminum tube comes standard in a variety of styles and shapes. Suri Rajendra Metal Supply Co. carries a large quantity of aluminum tubes, some of which include:

- Aluminum Angle
- Aluminum Flat
- Aluminum Channel

11. COPPER SHEETS



- Suri Rajendra Metal produce a wide range of Copper Sheets available for immediate dispatch.
- It can sometimes be difficult to know which thickness of copper is the most appropriate for your project. At Metal Supplies we have an expert team to hand to advise you on the right grade, finish and size you need.
- We can also offer a quick turnaround cutting service.
- Available in wide number of grades and finishes
 - 1800 X 900 X 0.6mm COPPER SHEET
 - 2000 X 914 X 24swg COPPER SHEET
 - 2000 X 1000 X 0.9mm COPPER SHEET
 - 2000 X 1000 X 1.2mm COPPER SHEET
 - 2500 X 1250 X 1.2mm COPPER SHEET
 - 2000 X 1000 X 1.5mm COPPER SHEET
 - 2500 X 1250 X 1.5mm COPPER SHEET
 - 2000 X 1000 X 2mm COPPER SHEET
 - 2000 X 1000 X 3mm COPPER SHEET
 - 3000 X 1000 X 3mm COPPER SHEET

12. COPPER TUBE & COIL

Suri Rajendra Metal supply an extensive range of copper tubing and is supplied in straight lengths and coils. Whether used for commercial or domestic use Metal Supplies offer a range of Copper to suit all your requirements. Our Copper products are produced in both Metric in a variety of grades, lengths and finishes.

METRIC copper tube:

Generally available in wide number of grades, finishes and lengths / coils.

- 6mm od X 1mm wall copper tube, 6mm od X 1.5mm wall copper tube
- 8mm od X 22swg, 0.8mm, 1mm copper tube,
- 10mm od X 1mm, 1.2mm wall copper tube
- 12mm od X 22swg, 0.6mm, 1mm, 1.2mm, 1.5mm copper tube
- 19.05mm BORE X 1.63mm wall copper tube
- 20mm od X 2mm wall copper tube
- 22mm od X 1.2mm, 1.5mm wall copper tube
- 28mm od X 1.2mm wall copper tube
- 38mm od X 1.5mm wall copper tube
- 40mm od X 6mm wall copper tube
- 42mm od X 1.2mm wall copper tube
- 48mm od X 6mm wall copper tube
- 53mm od X 7mm wall copper tube
- 54mm od X 1.2mm wall copper tube
- 57mm od X 1.5mm wall copper tube
- 76.1mm od X 2mm wall copper tube
- 88.9mm od X 2.25mm wall copper tube
- 108mm od X 2.5mm wall copper tube



13. COPPER FLAT BARS



- Suri Rajendra Metal are the No.1 provider of Copper Flat Bars available in a number of sizes to suit your application needs.
- We have a wide variety of stock available ready for immediate dispatch in both Metric and Imperial and different grades.
- We supply to both commercial customers and domestic homes.
- Generally available in 4.000 Metre lengths and predominantly in Grade C101.
- Generally available in 4.000 Metre lengths and predominantly in Grade C101.
- Metric copper flat bar: 20 x 5mm copper flat, 38 x 12mm copper flat, 40 x 10mm copper flat, 50 x 8mm copper flat, 50 x 12mm copper flat, 70 x 5mm copper flat, 80 x 5mm copper flat, 80 x 10mm copper flat, 100 x 10mm copper flat, 125 x 5mm copper flat, 150 x 3mm copper flat, 150 x 6mm copper flat, 250 x 6mm copper flat, 300 x 6mm copper flat.



14. Copper Bar



Suri Rajendra Metal offers a complete line of copper rod and copper round bar products. See below table for a list of the products we can supply that are ready to be ordered and dispatched. We also offer a quick turnaround cutting service.

METRIC COPPER ROD & ROUND BAR:

Generally available in 3.000 to 4.000 Metre lengths and predominantly in Grade C101, larger diameters are available.

4.85MM DIAMETER COPPER BAR

6MM DIAMETER COPPER BAR

10MM DIAMETER COPPER BAR

12MM DIAMETER COPPER BAR

20MM DIAMETER COPPER BAR

30MM DIAMETER COPPER BAR

150MM DIAMETER COPPER BAR

IMPERIAL COPPER ROD & ROUND BAR:

Generally available in 3.000 to 4.000 Metre lengths and predominantly in Grade C101, larger diameters are available.

3/32" DIAMETER COPPER BAR

3/8" DIAMETER COPPER BAR

1/2" DIAMETER COPPER BAR

5/8" DIAMETER COPPER BAR

7/8" DIAMETER COPPER BAR

1" DIAMETER COPPER BAR

2" DIAMETER COPPER BAR

2.1/4" DIAMETER COPPER BAR

2.1/2" DIAMETER COPPER BAR

3" DIAMETER COPPER BAR

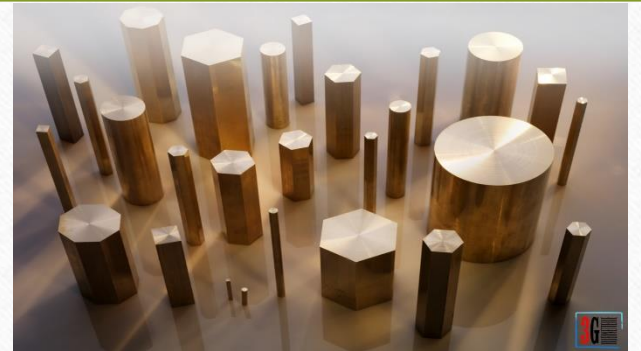
15. BRASS SHEET



- Brass sheet and brass plate are used for numerous applications. Created by alloying copper and zinc, brass exhibits high corrosion resistance, good durability, and high electrical conductivity, along with a shiny, decorative appearance. Brass sheet and brass plate are generally very easy to cut, machine, and fabricate.
- Applications for Brass Sheet & Brass Plate
- The versatility of brass sheet and plate make them useful materials for a broad range of applications. Common uses for brass plate and sheet include:
 - Construction/architecture
 - Manufacturing (from musical instruments to light fixtures)
 - Plumbing
 - Builder's hardware
 - Electrical and more.



16. BRASS Rods



- We offer excellent quality of Brass Rod & Hex that is widely used for several industrial purposes.
- These Rods and Hex are manufactured under close supervision of experts and these are appreciated for rust resistance, heat tolerance and effective performance.
- These are available in many dimensions and can also be modified and customized as per the requirement of our clients.
- These rods and hex find their application in gear, locks, screws, nuts and auto parts manufacturing companies.

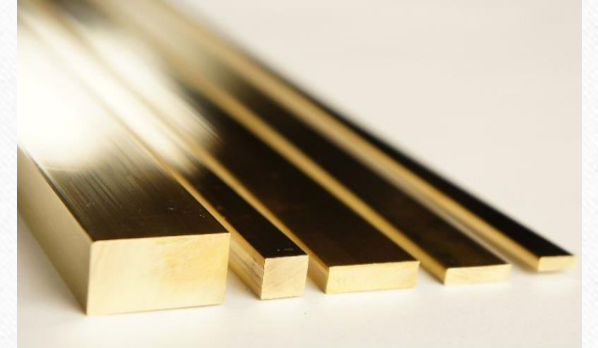
Material	Brass
Shape	Round, Hex & Square
Diameter	1.0 to 120 mm
Usage	Industrial

17. Brass Tube & Pipe

- BRASS PIPES & TUBES RANGE :- 4.76 mm od UP TO 75 mm od X IN THICKNESS 0.5 mm TO 6 mm



18. Brass Flat



Brass Flat are used in a variety of applications across a range industries. An alloy of copper and zinc, brass provides excellent machinability, good durability and electrical conductivity, and high corrosion resistance, as well as a pleasing, gold-like appearance. Brass angle and brass channel are easily machined, cut, drilled, and fabricated.

Applications for Brass Flat:

- Thanks to their good overall mechanical properties, versatility, and decorative appearance, brass channel and brass angle are popular for numerous applications.
- Common uses for brass angle and channel include: Decorative architecture, Building construction, Marine applications, Equipment manufacturing, Electrical and more.

Why Us?

- We are a famous and dependable firm that is actively committed towards offering premium quality range of products in numerous specifications within minimum time period and at genuine rates.
- Few of the essential factors that help us to become the prime choice of the patrons are listed below:
- State-of-the-art infrastructural base
- Qualitative products
- Dexterous team of professionals
- Client-centric approach
- Positive records
- Excellent transport & logistic facility
- Economical price range
- Prompt delivery

APPLICATIONS:

- PHARMACEUTICAL MACHINERY MANUFACTURER
- CHEMICAL PLANTS & MACHINERY
- AIRCRAFT & AEROSPACE INDUSTRY
- ENGINEERING & CONSTRUCTION
- CEMENT PLANTS, POWER PLANTS, WATER TREATMENT PLANTS, PHARMACEUTICAL PLANTS
- DEFENCE & NUCLEAR POWER
- DAIRY & FOOD INDUSTRIES
- FERTILIZER
- HEAT EXCHANGERS
- INSTRUMENTATION
- OIL & GAS INDUSTRY
- PETRO CHEMICALS & SHIP BUILDING INDUSTRY
- ALL MAJOR INDUSTRIES

CONTACT DETAILS:

Address:

2/4, Durga Estate, Opp. Ajay Estate, Gujarat Bottling Road, Nr. Kewal Kanta, Rakhial, Ahmedabad-380023.

Sister Concern:

Kalyan Metal Syndicate, Rakhial, Ahmedabad.

Contact Us:

Rajesh Mehta (+91-9426011763), Nikunsh Mehta (+91-9472311623)

 079-22742845,  079-22742845

 +91 9426011763, 9427311623.

 surirajendra079@gmail.com, surirajendra079@yahoo.in

THANK
YOU!